



West River Valley Supportive Housing

West River Valley Senior Housing is located in a newly-constructed wing off of the assisted living building. These apartments offer the flexibility of independent living with a supportive array of in-house services available for the “what-ifs” of life. Available services and amenities include:

- An abundance of recreation & leisure activities
- Flexible meal plan options
- Housekeeping & laundry services
- Transportation to shopping & appointments
- Access to our emergency call system
- Cable TV and telephone hook-ups
- Free Wi-Fi

Rent includes all housing utilities (heat, hot water, electricity, and trash pick up) plus on-site maintenance and property management.

West River Valley Supportive Housing

461 Grafton Road
Townshend, VT 05353

Phone: 802-365-7190

Fax: 802-365-7601

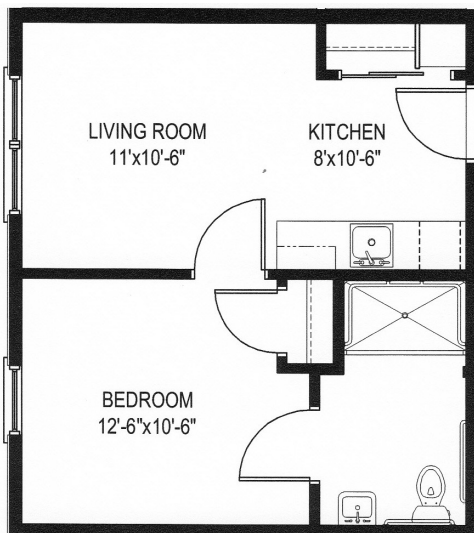
Business Office:

PO Box 341

Townshend, VT 05353

Phone: 802-365-4115

www.valleycares.org



Comfortable, Spacious Apartments

- Our apartment layouts offer open concept living and kitchen areas, with a storage closet
- Kitchen includes full fridge, range & sink
- Each bedroom has a full closet & private bathroom
- All apartments are fully handicap accessible
- 433 square feet per residential apartment